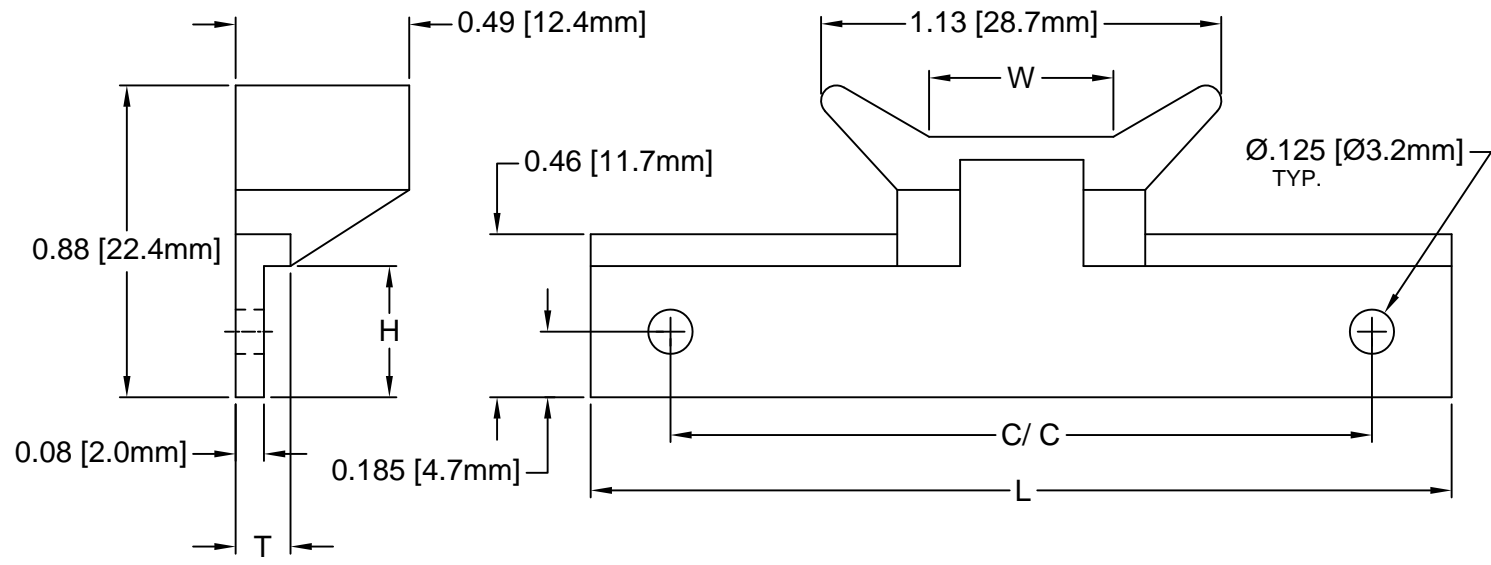

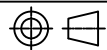


REV.	DESCRIPTION	DATE	APPROVED
A	Engineering Update w/o Changes	02/24/04	M. C.
B	Corrected P/Ns	09/05/06	M. C.
C	Added Dimension T & H to Table	11/13/13	G. W.
D	Added Note 4 & Color Options Sheet #2	05/16/16	J. C.



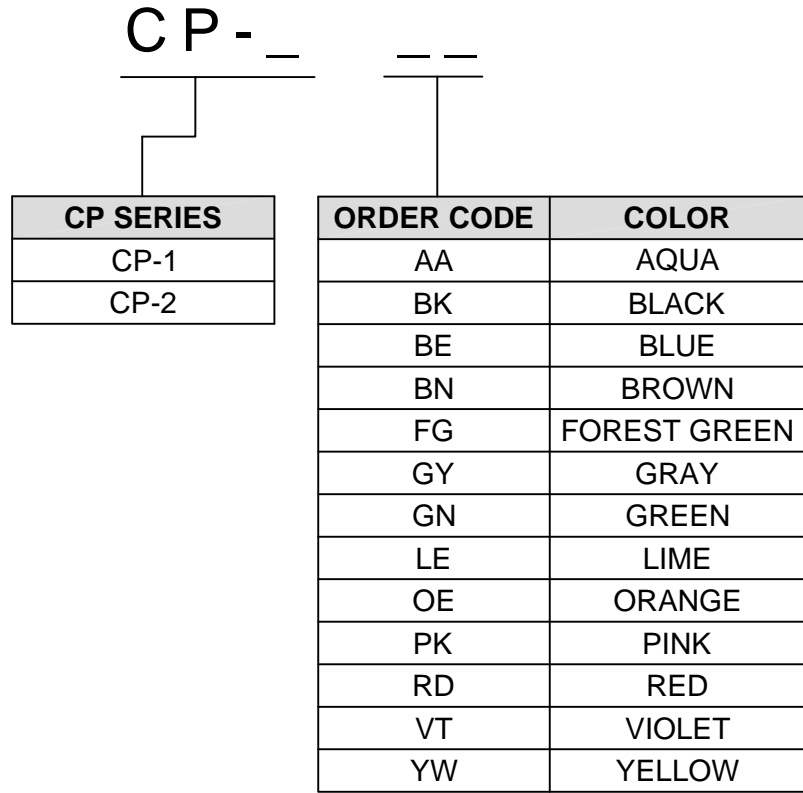
PART NO.	COLOR	L	W	T	H	C/C
CP-1 NT	NATURAL	1.30"(33.0mm)	.55"(14.0mm)	0.14"(3.5mm)	0.38"(9.6mm)	1.00"(25.4mm)
CP-1 WE	WHITE					
CP-1 XX	SEE S.#2					
CP-2 NT	NATURAL	2.43"(61.7mm)	.52"(13.2mm)	0.16"(3.9mm)	0.37"(9.4mm)	1.98"(50.3mm)
CP-2 WE	WHITE					
CP-2 XX	SEE S.#2					

3. MATERIAL: NYLON 6/6, 94V-2, WHITE.
2. MATERIAL: NYLON 6/6, 94V-2, NATURAL.
1. GENERAL SPECIFICATIONS: BIVAR MOLDED COMPONENT SPECIFICATION BV00-E101.

STANDARD TOLERANCE (UNLESS OTHERWISE SPECIFIED)		 4 THOMAS, IRVINE, CA. 92618 TEL: (949) 951-8808 FAX: (949) 951-3974	
DECIMALS	ANGULAR		
.X ± .1	X° ± 1°	 TITLE: CIRCUIT BOARD CARD EJECTOR	
.XX ± .01			
.XXX ± .005			
DESIGNED: S. Irving	DATE: 01/01/00	PART NO: CP-1&2	
CHECKED: D. Green	DATE: 02/24/04	REVISION: D	
		CAGE CODE : 32559 SHEET # 1 OF 2	
CAD GENERATED DOCUMENT. DO NOT MEASURE DRAWING.			

OTHER AVAILABLE COLORS
 * SEE TABLE FOR ORDERING INFORMATION

REV.	DESCRIPTION	DATE	APPROVED
	SEE SHEET #1		



4. PARTS ARE DYED TO COLOR UPON REQUEST.

STANDARD TOLERANCE (UNLESS OTHERWISE SPECIFIED) <small>DECIMALS ANGULAR</small>		BIVAR [®] 4 THOMAS, IRVINE, CA. 92618 <small>TEL: (949) 951-8808 FAX: (949) 951-3974</small>	
		TITLE: CIRCUIT BOARD CARD EJECTOR	
DESIGNED: S. Irving	DATE: 01/01/00	PART NO: CP-1&2	REVISION: D
CHECKED: D. Green	DATE: 02/24/04	CAGE CODE : 32559 SHEET # 2 OF 2 <small>CAD GENERATED DOCUMENT. DO NOT MEASURE DRAWING.</small>	