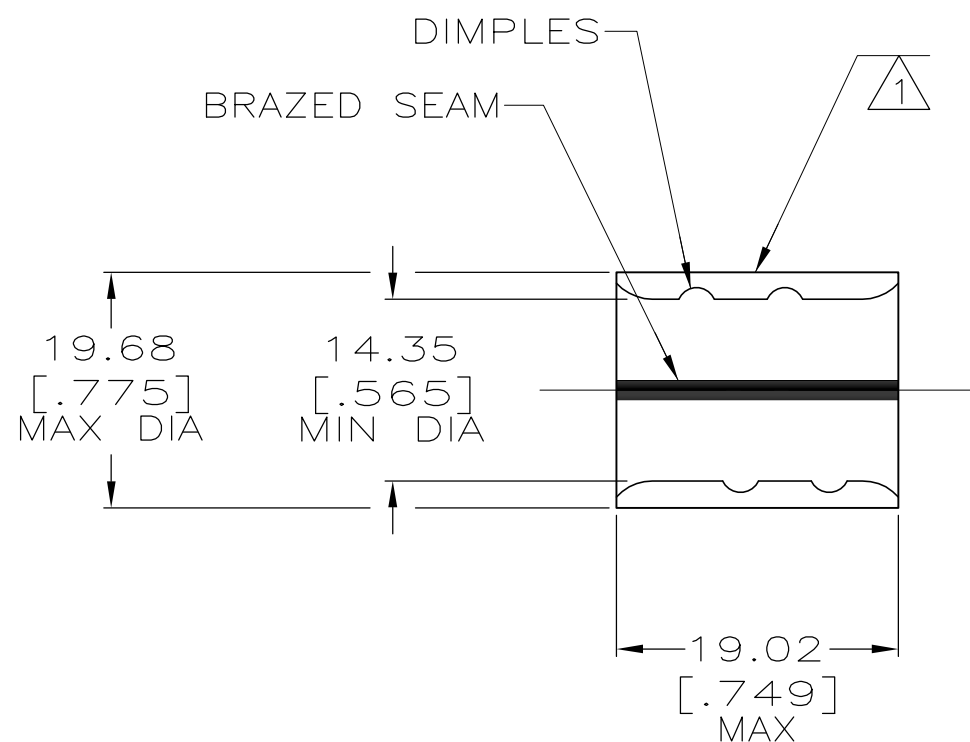


THIS DRAWING IS UNPUBLISHED. RELEASED FOR PUBLICATION
 © COPYRIGHT - BY TYCO ELECTRONICS CORPORATION. ALL RIGHTS RESERVED.

LOC	DIST	REVISIONS					
G	14	P	LTR	DESCRIPTION	DATE	DWN	APVD
			E1	REV PER ECR 08-010969	01MAY08	JR	RL

AMP WIRE RANGE	Listed FILE E13288	LR7189 Certified
3/0 AWG SOLID OR STRANDED	3/0 AWG STRANDED	3/0 AWG SOLID OR STRANDED



- ① STAMP AMP 3/0W* 150 LOCATE APPROX AS SHOWN
- 2 MATERIAL THK: 2.31 ±0.08 [.091 ±.003]
- ③ TIN PL 0.00254 [.000100] MIN THK PER ASTM B545.
- ④ CLEANED, UNPLATED
- ⑤ P/N 1-36909-1 IS NOT UL OR CSA LISTED.
- 6 STAMP FOR MANUFACTURING LOCATION OR CODE PERMISSIBLE.
- ⑦ PREPRODUCTION - FASR REQ.
- ⑧ NOT UL OR CSA LISTED
- ⑨ 0.00254 [.000100] MIN TIN-LEAD (60/40) PLATE PER SAE-AMS-P-81728
- ⑩ PRELIMINARY - NOT FOR PRODUCTION

⑨	-	LOOSE PIECE	⑧⑩ 36909-2
④	-	LOOSE PIECE	⑤⑦ 36909-1
③	-	LOOSE PIECE	36909
FINISH	QTY	PACKAGE TYPE	PART NO

AMP INCORPORATED
CUSTOMER SERVICE SYSTEMS

FOR ADDITIONAL PRODUCT INFORMATION OR COPIES OF DRAWINGS AND TECHNICAL DOCUMENTS
 PRODUCT INFORMATION CENTER
 1-800-522-6752

FOR APPLICATION TOOLING INFORMATION
 TOOLING ASSISTANCE CENTER
 1-800-722-1111

FOR ORDER ENTRY
 1-800-526-5142

MAX RECOMMENDED OPERATING TEMPERATURE:
 170° C

VOLTAGE RATING:
 N/A

CIRCULAR MIL AREA:
 150,500-190,000
 SOLID OR STRANDED

THIS DRAWING IS A CONTROLLED DOCUMENT.

DIMENSIONS: INCHES

TOLERANCES UNLESS OTHERWISE SPECIFIED:

0 PLC	± -
1 PLC	± -
2 PLC	± 0.20[.008]
3 PLC	± -
4 PLC	± -
ANGLES	± -

MATERIAL: COPPER ASTM B-152 ANNEALED

FINISH: SEE TABLE

DWN: JR RUTH 14FEB01
 CHK: MS FEHER 14FEB01
 APVD: M SPICER 14FEB01

Tyco Electronics Tyco Electronics Corporation
 Harrisburg, Pa 17105-3608

NAME: SPLICE, PARALLEL, SOLISTRAND

SIZE: A3 CAGE CODE: 00779 DRAWING NO: C-36909 RESTRICTED TO: -

WEIGHT: -

CUSTOMER DRAWING SCALE: 2:1 SHEET: 1 OF 1 REV: E1