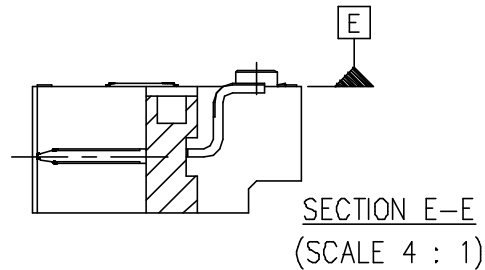
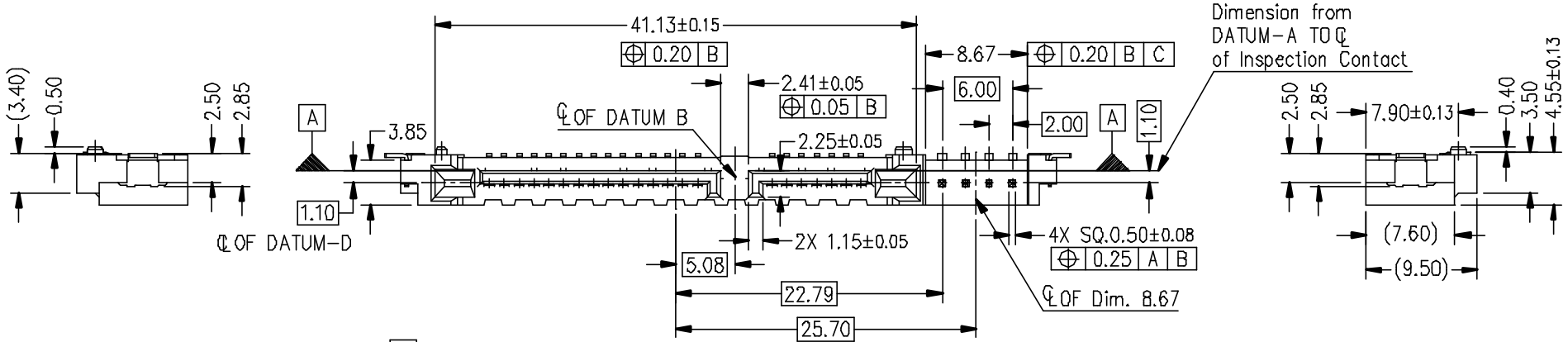
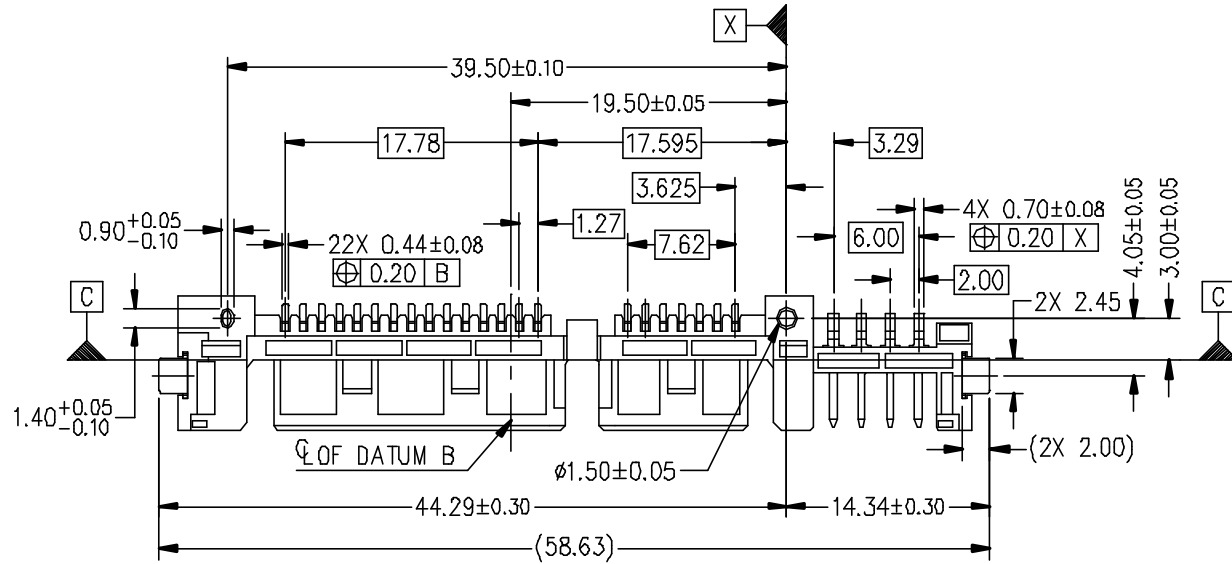


This document is the property of and embodies CONFIDENTIAL and proprietary information of FCI. No part of this information, shown on this drawing, may be used in any way or disclosed to others without the written consent of FCI. Copyright FCI.

FCI CONFIDENTIAL

PART NUMBER  
10092193-00XXLF



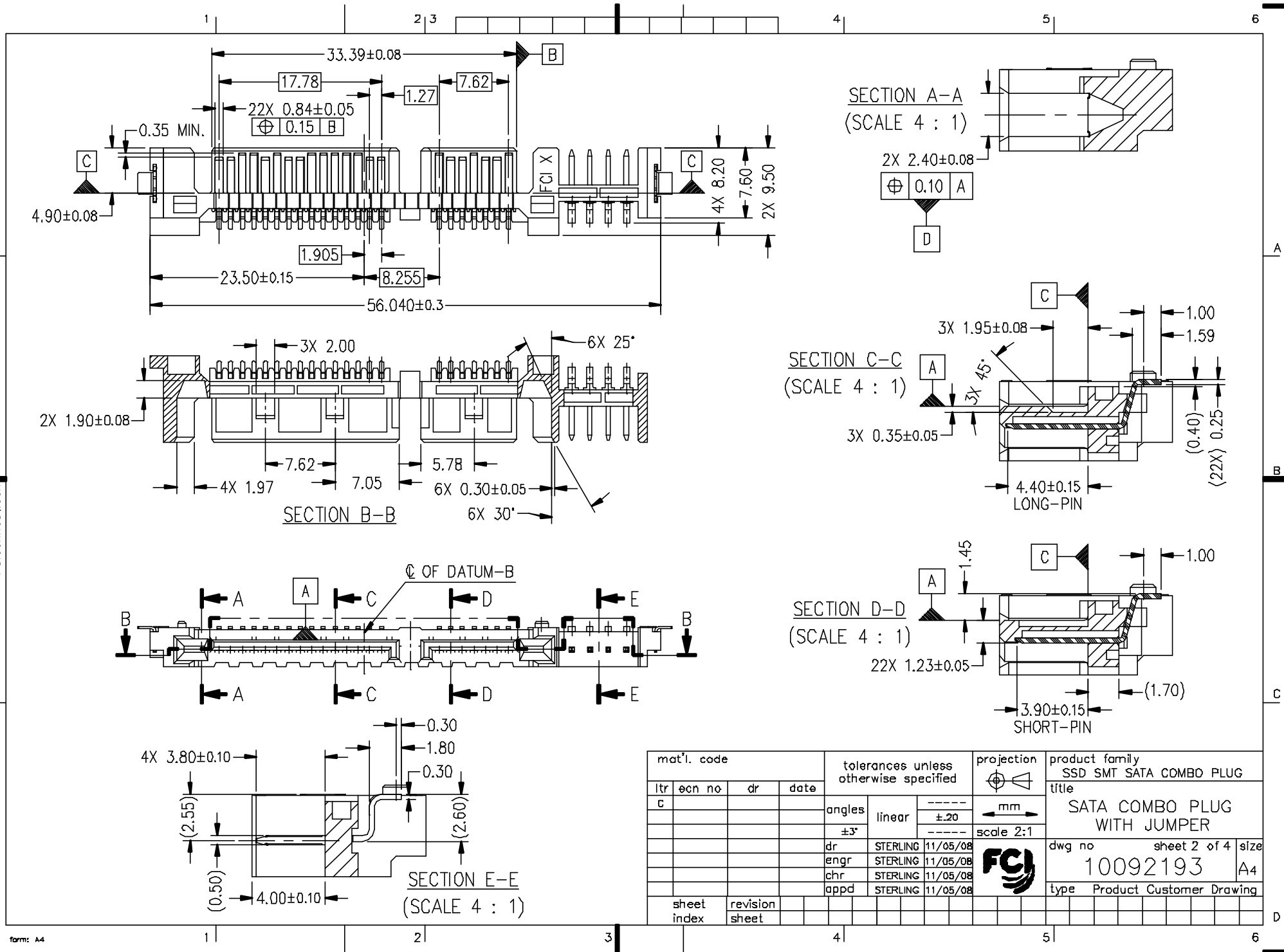
mat'l. code				tolerances unless otherwise specified			projection	product family	
ltr	ecn no	dr	date	angles	linear	mm	SSD SMT SATA COMBO PLUG		
A	SD9-0260	SLLIM	090819				title		
B	SD9-0325	SLLIM	091021	±3°	-----	scale 2:1	SATA COMBO PLUG WITH JUMPER		
C	ELX-S-15978	SLLIM	130930				title		
				dr	STERLING	11/05/08	dwg no		
				enr	STERLING	11/05/08	sheet 1 of 4		
				chr	STERLING	11/05/08	size		
				appd	STERLING	11/05/08	A4		
sheet index		revision	c c c c				type Product Customer Drawing		
		sheet	1	2	3	4			

This document is the property of and embodies CONFIDENTIAL and proprietary information of FCI. No part of the information shown on this drawing may be used in any way or disclosed to others without the written consent of FCI. Copyright FCI.

FCI CONFIDENTIAL



FCIconnect.com



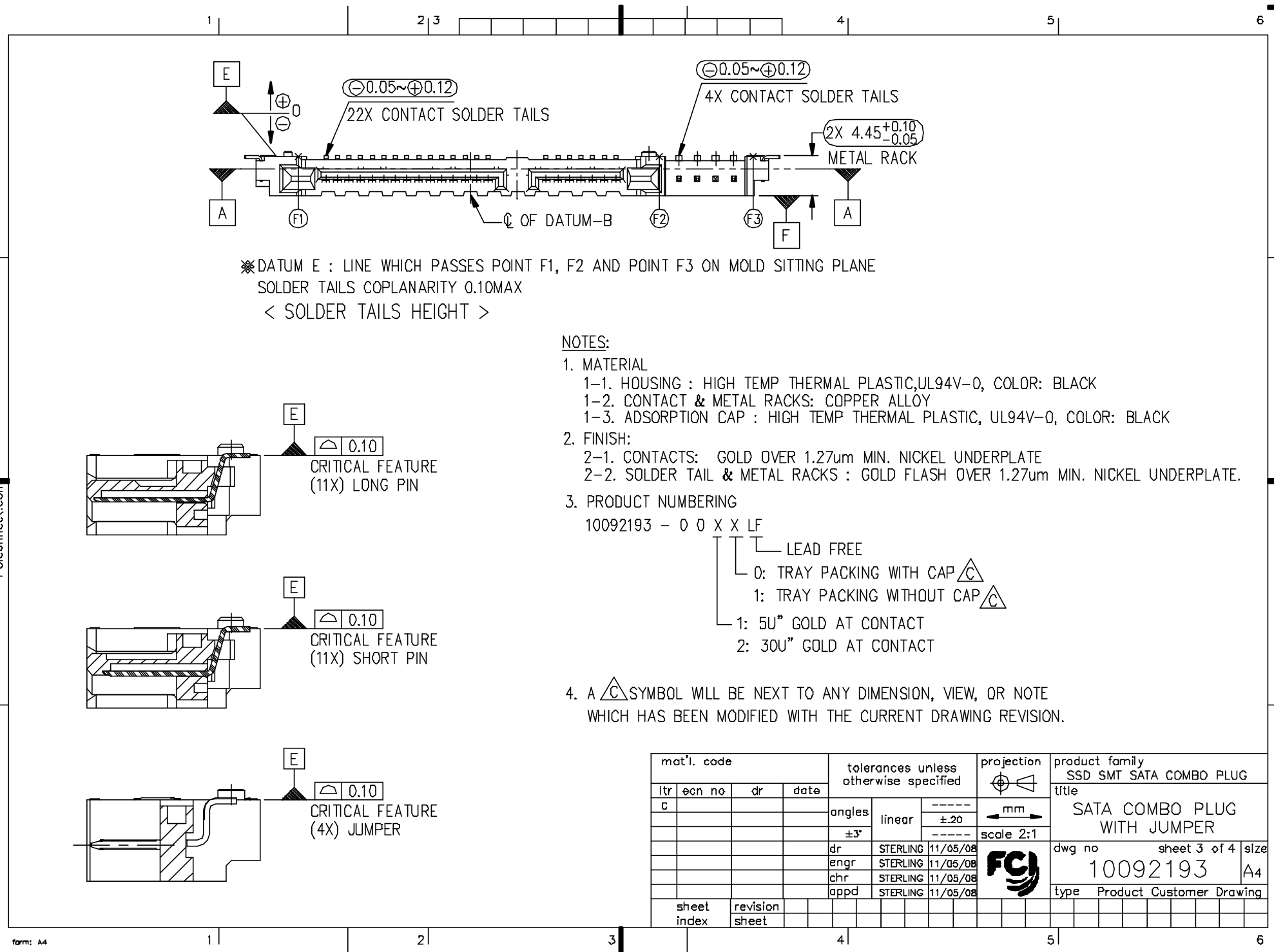
mat'l. code				tolerances unless otherwise specified			projection	product family	
ltr	ecn no	dr	date	angles	linear	mm	SSD SMT SATA COMBO PLUG		
c							title		
				±3°	±.20	scale 2:1	SATA COMBO PLUG WITH JUMPER		
		dr	STERLING	11/05/08			dwg no	sheet 2 of 4	
		enr	STERLING	11/05/08			10092193	size A4	
		chr	STERLING	11/05/08			type Product Customer Drawing		
		appd	STERLING	11/05/08					
sheet index	revision sheet								

This document is the property of and embodies CONFIDENTIAL and  
 exact information of FCJ. No part of the information shown  
 on this document may be used in any way or disclosed to others  
 without the written consent of FCJ.  
 Copyright FCJ.

FCJ CONFIDENTIAL



FCconnect.com



※ DATUM E : LINE WHICH PASSES POINT F1, F2 AND POINT F3 ON MOLD SITTING PLANE  
 SOLDER TAILS COPLANARITY 0.10MAX  
 < SOLDER TAILS HEIGHT >

**NOTES:**

1. MATERIAL
  - 1-1. HOUSING : HIGH TEMP THERMAL PLASTIC, UL94V-0, COLOR: BLACK
  - 1-2. CONTACT & METAL RACKS: COPPER ALLØY
  - 1-3. ADSORPTION CAP : HIGH TEMP THERMAL PLASTIC, UL94V-0, COLOR: BLACK
2. FINISH:
  - 2-1. CONTACTS: GOLD OVER 1.27µm MIN. NICKEL UNDERPLATE
  - 2-2. SOLDER TAIL & METAL RACKS : GOLD FLASH OVER 1.27µm MIN. NICKEL UNDERPLATE.
3. PRODUCT NUMBERING
  - 10092193 - 0 0 X X LF

- LEAD FREE
- 0: TRAY PACKING WITH CAP
- 1: TRAY PACKING WITHOUT CAP
- 1: 5U" GOLD AT CONTACT
- 2: 30U" GOLD AT CONTACT

4. A SYMBOL WILL BE NEXT TO ANY DIMENSION, VIEW, OR NOTE WHICH HAS BEEN MODIFIED WITH THE CURRENT DRAWING REVISION.

mat'l. code				tolerances unless otherwise specified		projection	product family		
ltr	ecn no	dr	date	angles	linear		SSD SMT SATA COMBO PLUG		
c							±.20	title	
				±3°		mm	SATA COMBO PLUG WITH JUMPER		
				dr	STERLING	11/05/08	scale 2:1		
				enr	STERLING	11/05/08	dwg no		
				chr	STERLING	11/05/08	sheet 3 of 4		
				appd	STERLING	11/05/08	size		
sheet index		revision sheet						10092193	
						type		Product Customer Drawing	

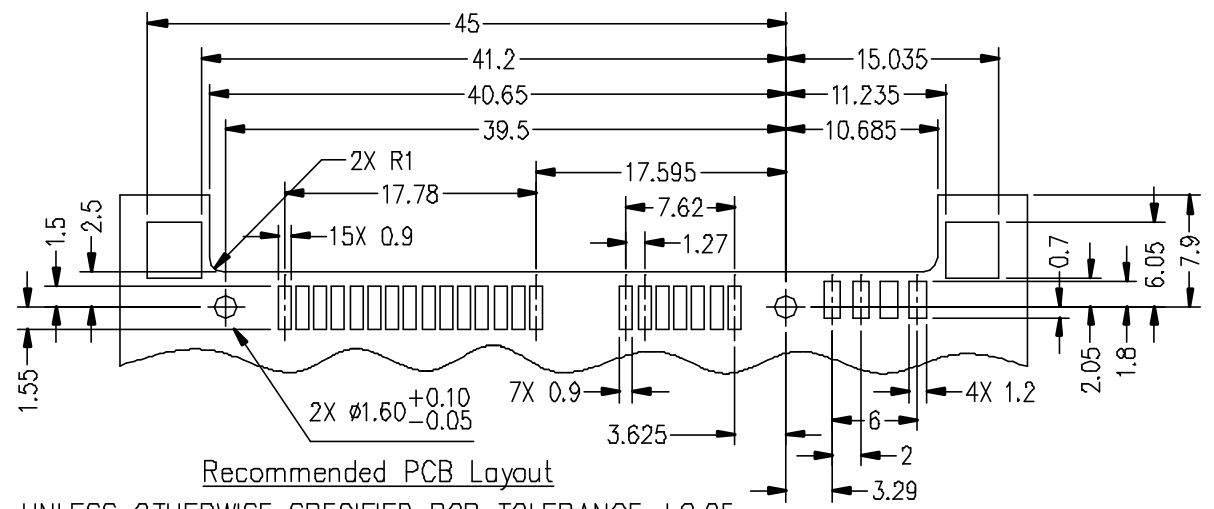
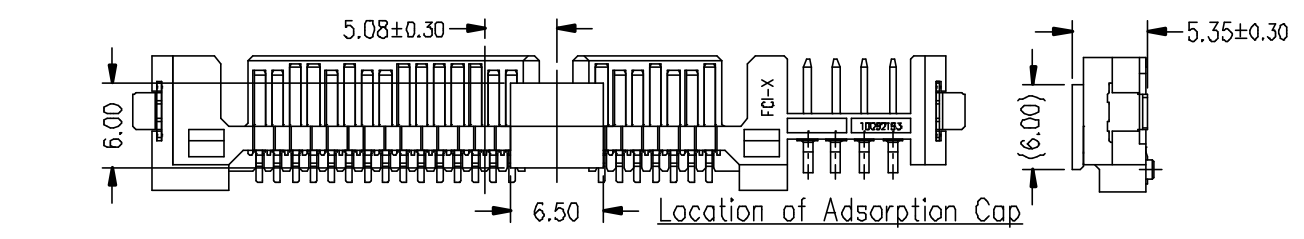
This document is the property of and embodies CONFIDENTIAL and  
 other proprietary information of FCJ. No part of the information shown  
 on this document may be used in any way or disclosed to others  
 without the written consent of FCJ.  
 Copyright FCJ.

FCJ CONFIDENTIAL

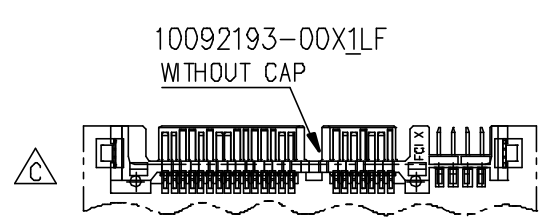
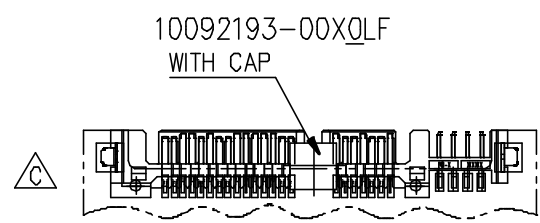


FCconnect.com

1 | 2 | 3 | 4 | 5 | 6



Recommended PCB Layout  
 UNLESS OTHERWISE SPECIFIED PCB TOLERANCE ±0.05



mat'l. code				tolerances unless otherwise specified			projection	product family	
ltr	ecn no	dr	date	angles ±3°	linear	mm	SSD SMT SATA COMBO PLUG		
c							title		
				dr	STERLING	11/05/08	SATA COMBO PLUG WITH JUMPER		
				enr	STERLING	11/05/08	SATA COMBO PLUG WITH JUMPER		
				chr	STERLING	11/05/08	SATA COMBO PLUG WITH JUMPER		
				appd	STERLING	11/05/08	SATA COMBO PLUG WITH JUMPER		
sheet index		revision sheet							



form: A4 | 1 | 2 | 3 | 4 | 5 | 6