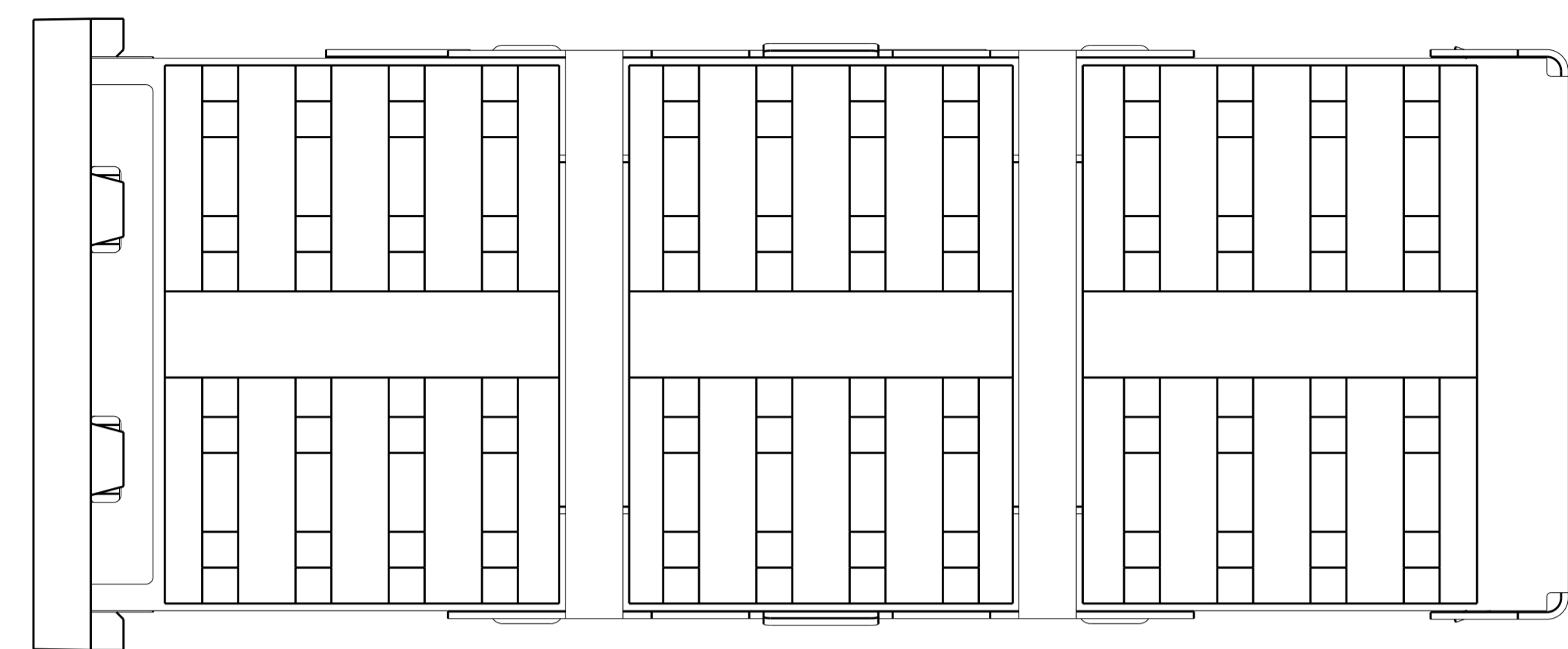
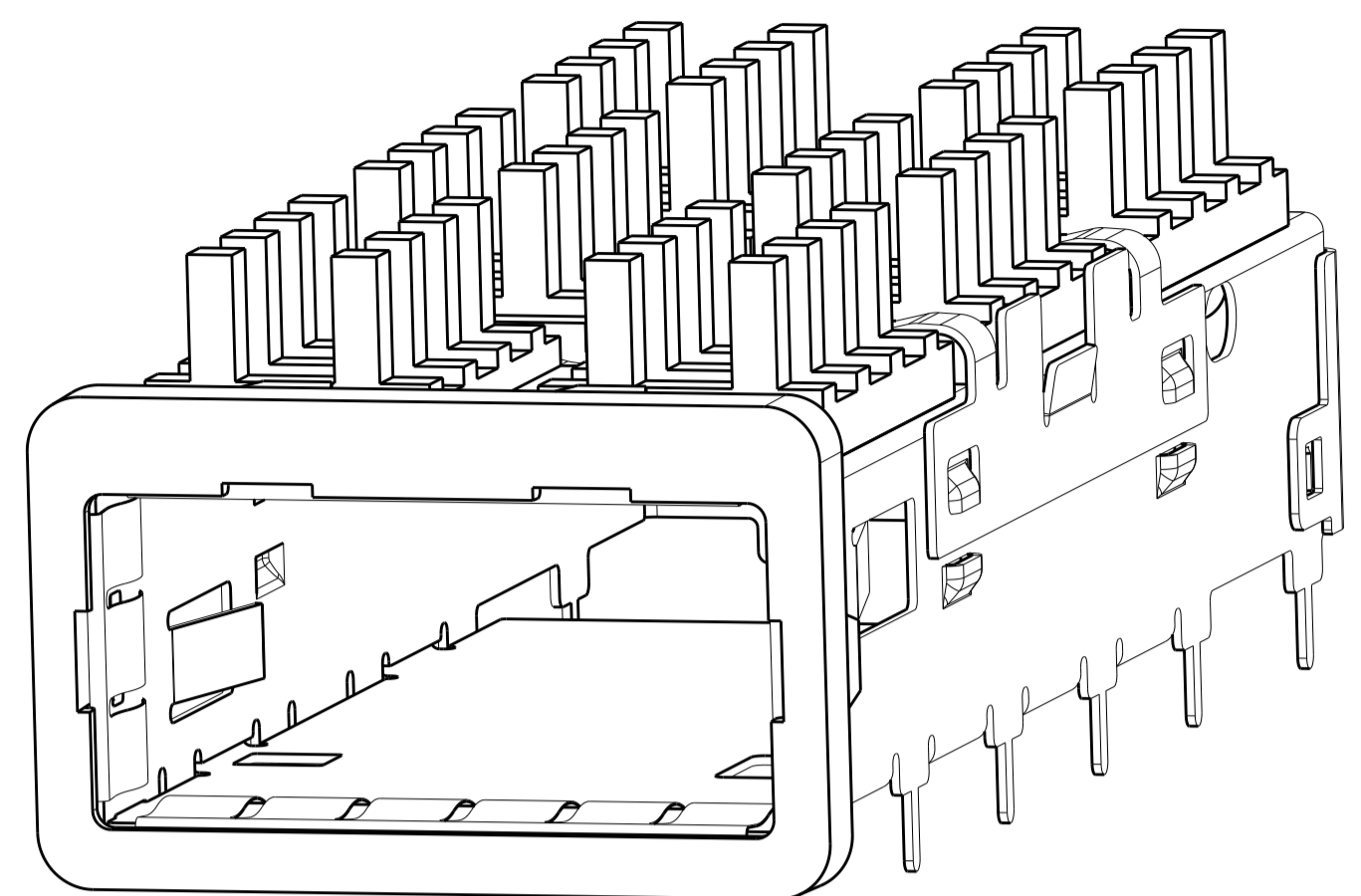
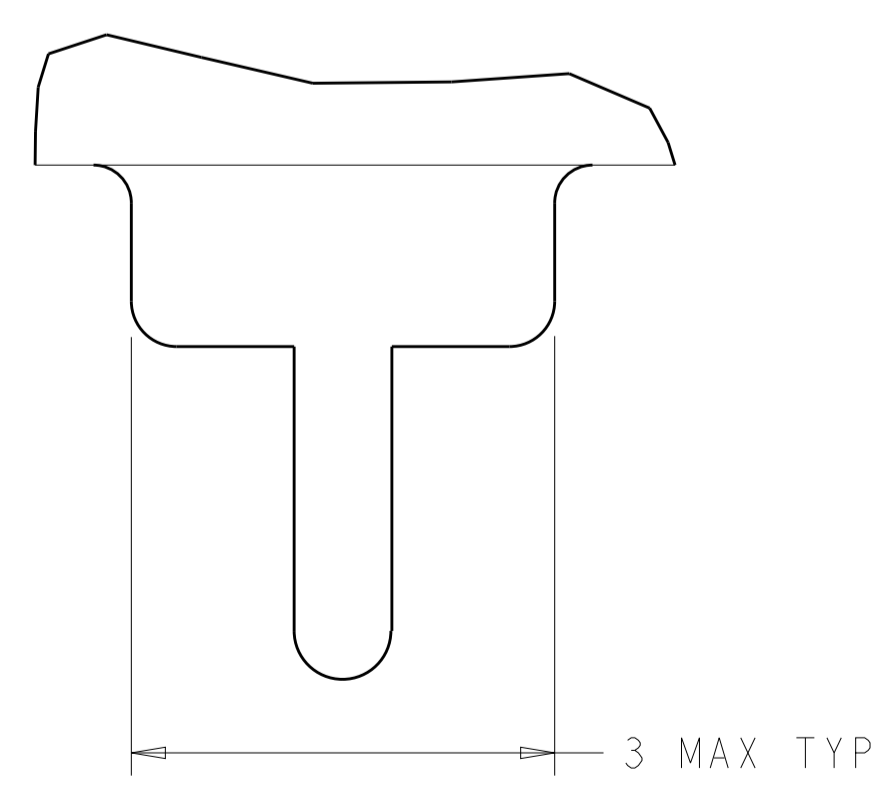
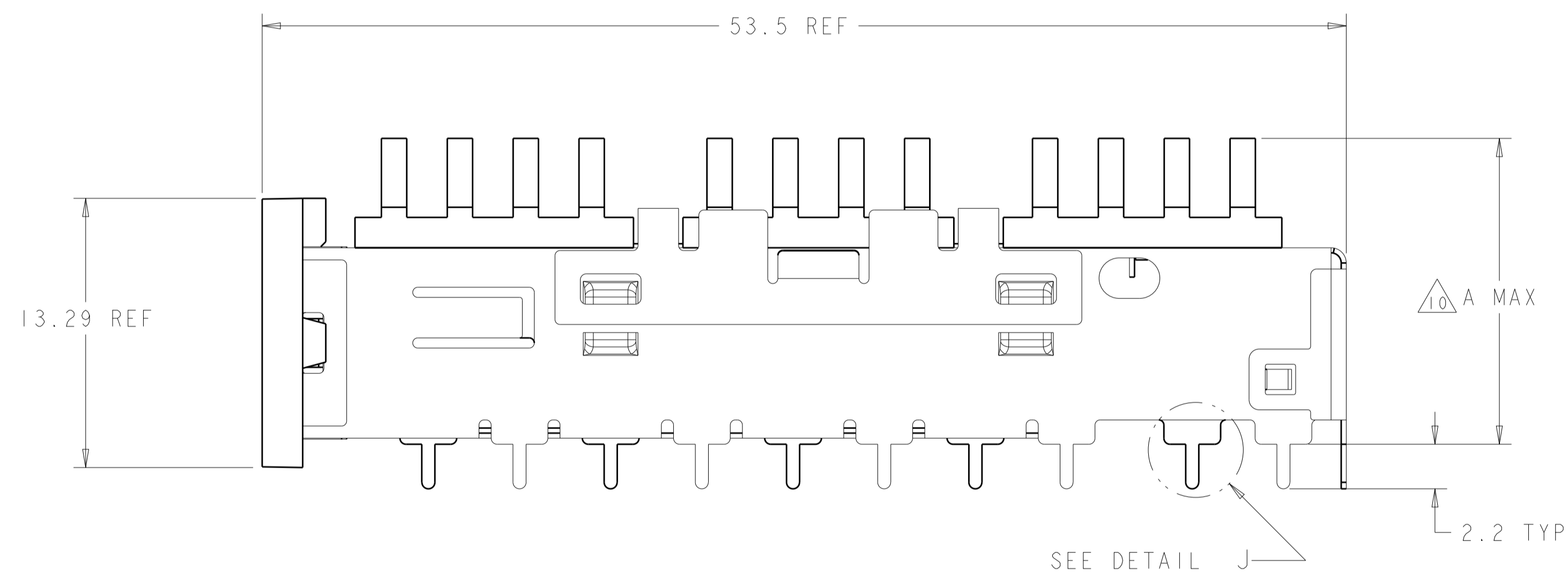
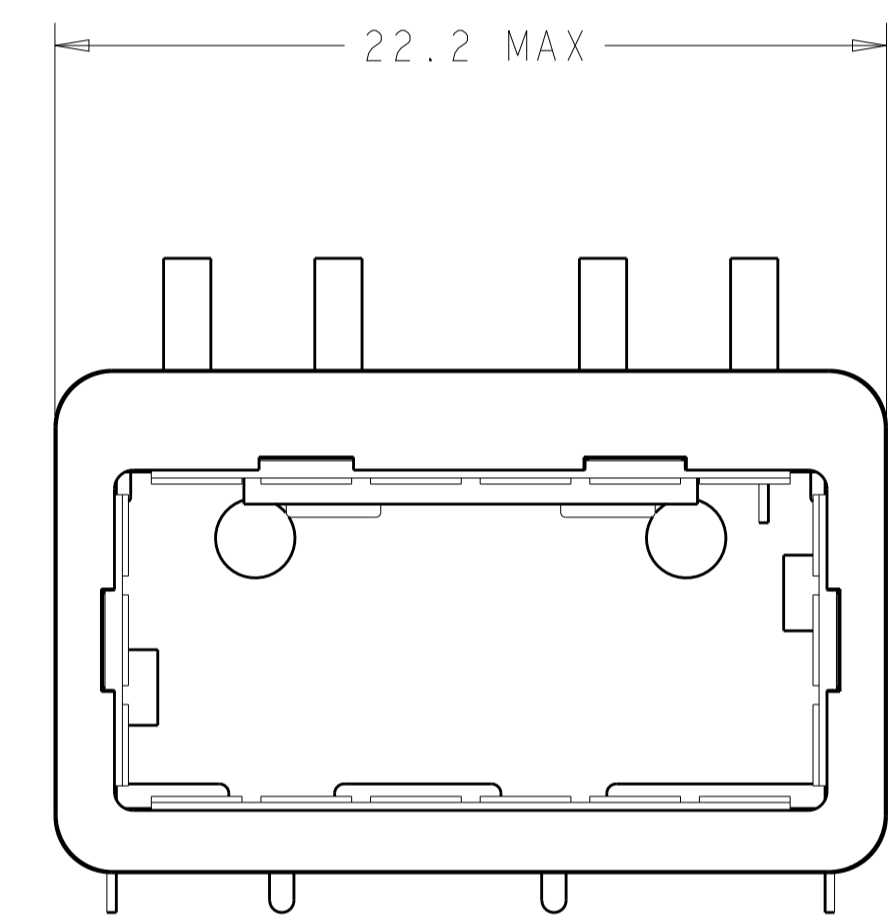


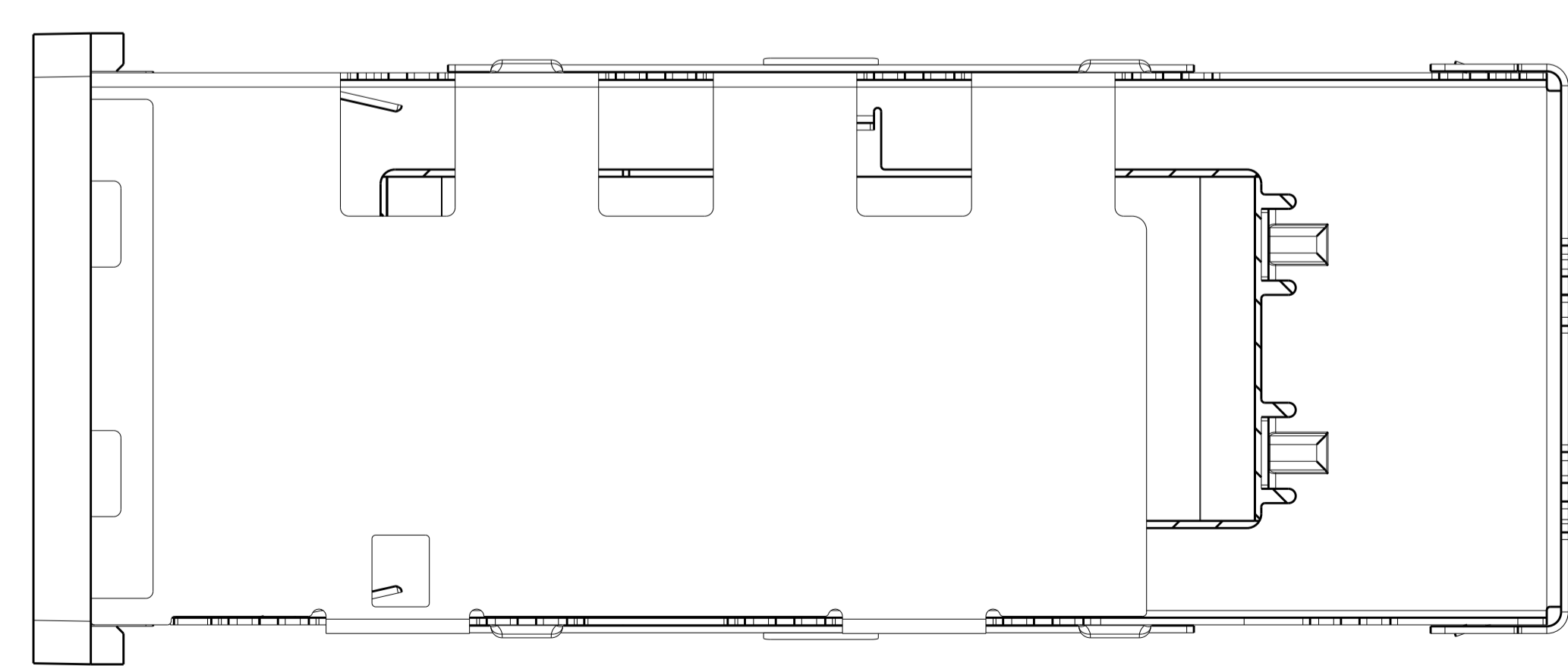
| LOC | | DIST | | REVISONS | | | |
|-----|----|------|-----|-------------|-----------|-----|------|
| GP | 00 | P | LTN | DESCRIPTION | DATE | DMN | APVD |
| | | I | | PRELIMINARY | 23AUG2012 | DZ | JY |



- ⚠ CAGE MATERIAL: NICKEL SILVER, 0.25 THICK
 HEAT SINK MATERIAL: ALUMINUM
 HEAT SINK CLIP MATERIAL: STAINLESS STEEL
 EMI SPRING MATERIAL: COPPER ALLOY
 FRONT FLANGE MATERIAL: ZINC ALLOY
- ⚠ MINIMUM PITCH DIMENSION.
- 3. MATES WITH QSFP MSA COMPATIBLE TRANSCEIVER.
- ⚠ REFERENCE APPLICATION SPEC 114-13218 FOR RECOMMENDED DRILL HOLE DIAMETER AND PLATING THICKNESS.
- ⚠ DATUMS AND BASIC DIMENSIONS ESTABLISHED BY CUSTOMER.
- ⚠ DIMENSION C IS THE NOMINAL THICKNESS OF CUSTOMER SUPPLIED PC BOARD, SINGLE SIDED PC BOARD MINIMUM THICKNESS: 1.45
- ⚠ HEAT SINK AND CLIP SHIPPED ASSEMBLED TO CAGE ASSEMBLY. CAGE ASSEMBLY MAY BE PRESSED INTO THE PCB AS SHIPPED.
- ⚠ DATUM -A- IS TOP SURFACE OF HOST BOARD.
- ⚠ SURFACE TRACES PERMITTED WITHIN THIS AREA EXCEPT WHERE CAGE STANDOFFS, SHOWN IN DETAIL J, CONTACT PC BOARD.
- ⚠ DIMENSION APPLIES WITH MODULE INSTALLED IN THE CAGE.
- ⚠ DATE CODE (YYWW) MARKED ON TOP OF CAGE AND CONCEALED BY HEAT SINK APPLIES TO CAGE ASSEMBLY ONLY.
- ⚠ EMI SPRING FINISH: 2µm MIN TIN.
 FRONT FLANGE FINISH: 3µm MIN TIN OVER 1.27µm MIN NICKEL OVER 5.08µm MIN COPPER.
 HEAT SINK FINISH: 0.076µm MIN NICKEL.
- 13. PRODUCT HAS NOT COMPLETED QUALIFICATION TESTING.



DETAIL J
 SCALE 20:1

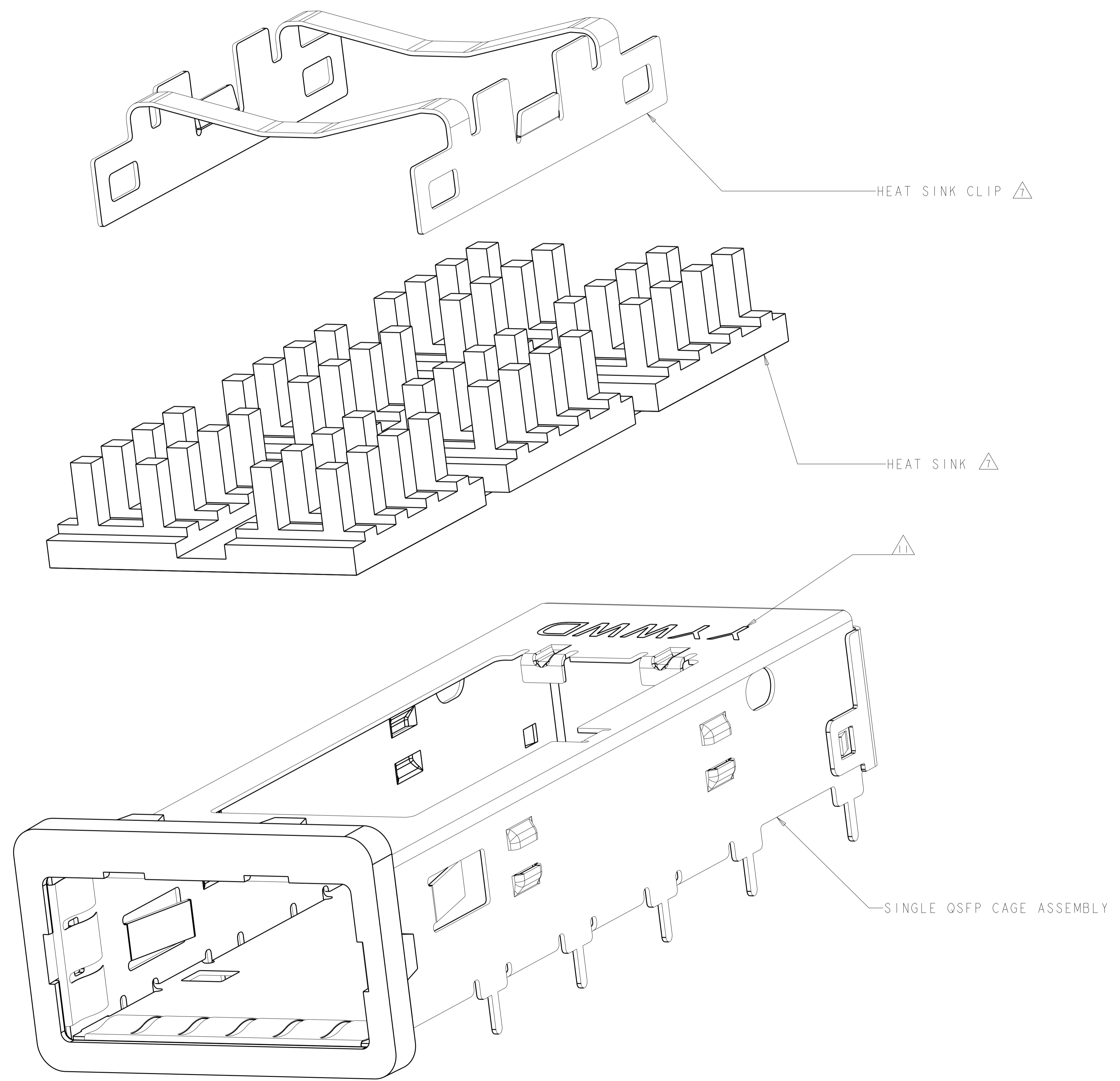


| | | |
|------|---------------|-------------|
| 13.7 | PCI HEAT SINK | 2170395-1 |
| A | DESCRIPTION | PART NUMBER |

DESIGN APPROVED THIS PRINT IS
PRELIMINARY
 TO FIRST PIECE APPROVAL
 CONTACT PRODUCT ENGINEERING
 BEFORE USING THIS PRINT

| | | | | | | |
|--|--------|----------------------|------------------|---|------------|---------------|
| THIS DRAWING IS A CONTROLLED DOCUMENT. | | DMN D ZHU 23AUG2012 | | TE Connectivity CAGE ASSEMBLY, BEHIND BEZEL, QSFP WITH HEAT SINK | | |
| DIMENSIONS: | | CHK J LANG 23AUG2012 | | | | |
| TOLERANCES UNLESS OTHERWISE SPECIFIED: | | APVD A GAI 23AUG2012 | | | | |
| mm | | NAME | | | | |
| 0 PLC | ± | PRODUCT SPEC | SIZE | CAGE CODE | DRAWING NO | RESTRICTED TO |
| 1 PLC | ±0.5 | 108-2286 | A1 | 00779 | C=2170395 | - |
| 2 PLC | ±0.13 | APPLICATION SPEC | SCALE | SHEET | OF | REV |
| 3 PLC | ±0.013 | 114-13218 | 2:1 | 1 | 4 | 1 |
| 4 PLC | ±0.001 | WEIGHT | Customer Drawing | | | |
| ANGLES | ± | | | | | |
| MATERIAL | FINISH | | | | | |

| LOC | DIST | REVISIONS | | | |
|-----|------|-------------|------|-----|------|
| P | LTN | DESCRIPTION | DATE | DMN | APVD |
| GP | 00 | SEE SHEET 1 | - | - | - |
| | | | | | |
| | | | | | |

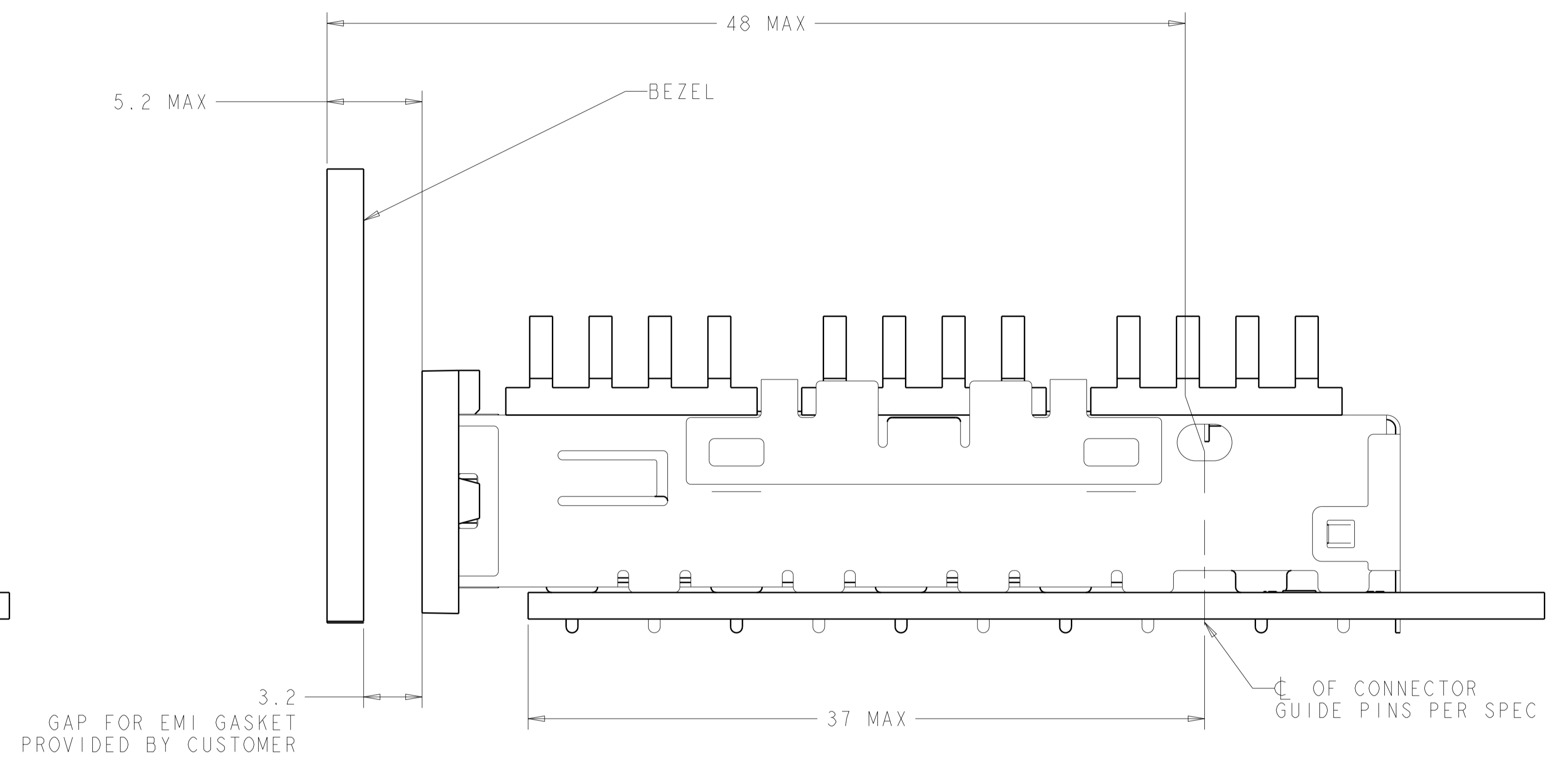
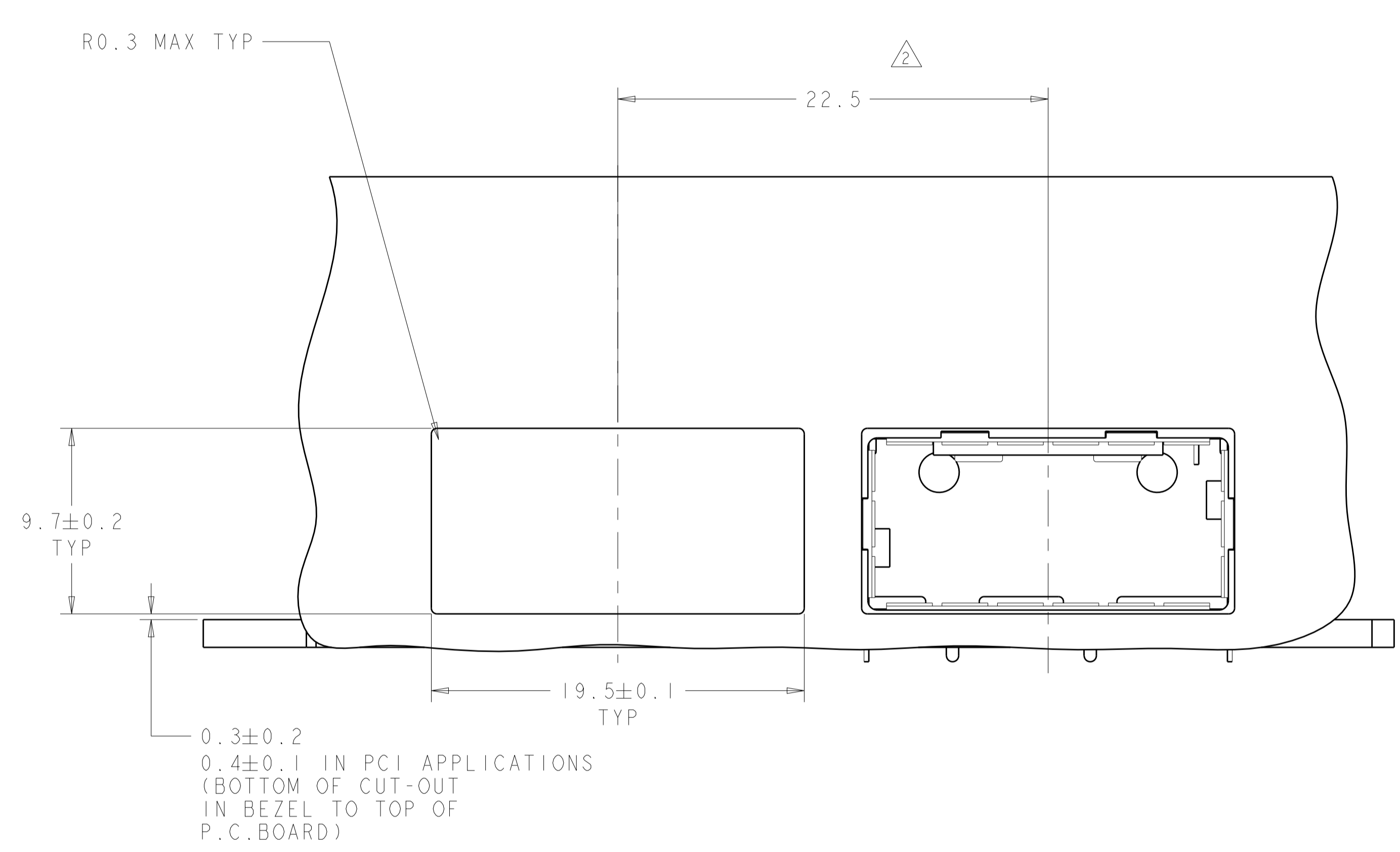


EXPLODED VIEW
 SCALE 8:1

DESIGN APPROVED THIS PRINT IS
PRELIMINARY
 TO FIRST PIECE APPROVAL
 CONTACT PRODUCT ENGINEERING
 BEFORE USING THIS PRINT

| | | | | | | |
|--|--|-------------------------------|--|--------------------|-----------------------|--------------------|
| THIS DRAWING IS A CONTROLLED DOCUMENT. | | DMN D. ZHU 23AUG2012 | SIZE A1 | CAGE CODE 00779 | DRAWING NO 2170395 | RESTRICTED TO - |
| DIMENSIONS: mm | | CHK J. YANG 23AUG2012 | NAME CAGE ASSEMBLY, BEHIND BEZEL, QSPF WITH HEAT SINK | | | |
| TOLERANCES UNLESS OTHERWISE SPECIFIED: | | APVD A. CAI 23AUG2012 | PRODUCT SPEC 108-2286 | | | |
| 0 PLC ±0.5 | | APPLICATION SPEC 114-13218 | | | | |
| 2 PLC ±0.13 | | WEIGHT - | | | | |
| 3 PLC ±0.013 | | MATERIAL - | | | | |
| 4 PLC ±0.001 | | FINISH - | | | | |
| ANGLES ±0.001 | | Customer Drawing | | | | |
| SCALE 2:1 | | SHEET 2 OF 4 | | REV 1 | | |

| LOC | DIST | REVISIONS | | | | | |
|-----|------|-----------|-----|-------------|------|-----|------|
| GP | 00 | P. | LTN | DESCRIPTION | DATE | DWN | APVD |
| - | - | - | - | SEE SHEET 1 | - | - | - |
| | | | | | | | |
| | | | | | | | |



DESIGN APPROVED THIS PRINT IS
PRELIMINARY
 TO FIRST PIECE APPROVAL
 CONTACT PRODUCT ENGINEERING
 BEFORE USING THIS PRINT

| | | | | |
|--|--------------|------------------|-----------|--|
| THIS DRAWING IS A CONTROLLED DOCUMENT. | | DWN D. ZHU | 23AUG2012 | STE TE Connectivity |
| DIMENSIONS: mm | | CHK J. YANG | 23AUG2012 | |
| TOLERANCES UNLESS OTHERWISE SPECIFIED: | | APVD A. CAI | 23AUG2012 | NAME CAGE ASSEMBLY, BEHIND BEZEL, QSFP, WITH HEAT SINK |
| 0 PLC ±0.5 | 1 PLC ±0.13 | PRODUCT SPEC | 108-2286 | SIZE A1 |
| 2 PLC ±0.013 | 3 PLC ±0.001 | APPLICATION SPEC | 114-13218 | CAGE CODE 2170395 |
| 4 PLC ±0.0001 | ANGLES ± | WEIGHT | - | RESTRICTED TO |
| MATERIAL | FINISH | Customer Drawing | SCALE 2:1 | SHEET 3 OF 4 |

