



SAW Components

Data Sheet X 6964 M





SAW Components

X 6964 M

Bandpass Filter

43,75 MHz

Data Sheet

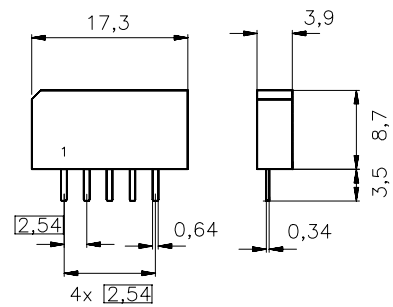
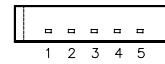
Plastic package **SIP5K**

Features

- IF filter for digital cable TV

Terminals

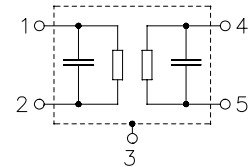
- Tinned CuFe alloy



Dimensions in mm, approx. weight 1,0 g

Pin configuration

- 1 Input
- 2 Input - ground
- 3 Chip carrier - ground
- 4 Output
- 5 Output



Type	Ordering code	Marking and package according to	Packing according to
X 6964 M	B39438-X6964-M100	C61157-A1-A15	F61074-V8067-Z000

Maximum ratings

Operable temperature range	T_A	-25/+65	°C	
Storage temperature range	T_{stg}	-40/+85	°C	
DC voltage	V_{DC}	5	V	between any terminals
AC voltage	V_{pp}	10	V	between any terminals


SAW Components
X 6964 M
Bandpass Filter
43,75 MHz
Data Sheet
Characteristics

Reference temperature: $T_A = 25 (45) \text{ }^\circ\text{C}$
 Terminating source impedance: $Z_S = 50 \text{ } \Omega$
 Terminating load impedance: $Z_L = 2 \text{ k}\Omega \parallel 3 \text{ pF}$

		min.	typ.	max.	
Center frequency (center between 3 dB points)	f_C	—	43,75	—	MHz
Insertion attenuation Reference level for the following data	α 43,81 (43,75) MHz	13,3	14,8	16,3	dB
Pass bandwidth $\alpha_{\text{rel}} \leq 3 \text{ dB}$	$B_{3\text{dB}}$	—	6,0	—	MHz
$\alpha_{\text{rel}} \leq 30 \text{ dB}$	$B_{30\text{dB}}$	—	7,6	—	MHz
Relative attenuation	α_{rel}				
	41,28 (41,22) MHz	-0,8	0,2	1,2	dB
	46,34 (46,28) MHz	-0,7	0,3	1,3	dB
	40,81 (40,75) MHz	1,3	2,5	3,7	dB
	46,81 (46,75) MHz	1,6	2,8	4,0	dB
	40,31 (40,25) MHz	9,0	12,0	—	dB
	47,31 (47,25) MHz	9,0	13,0	—	dB
	39,81 (39,75) MHz	38,0	50,0	—	dB
	47,81 (47,75) MHz	38,0	52,0	—	dB
Lower sidelobe 35,06 ... 39,81 (35,00 ... 39,75) MHz		38,0	46,0	—	dB
Upper sidelobe 47,81 ... 55,06 (47,75 ... 55,00) MHz		38,0	44,0	—	dB
Reflected wave signal suppression 1,3 μs ... 6,0 μs after main pulse (test pulse 250 ns, carrier frequency 43,81 MHz)		42,0	52,0	—	dB
Feedthrough signal suppression 1,3 μs ... 1,2 μs before main pulse (test pulse 250 ns, carrier frequency 43,81 MHz)		50,0	56,0	—	dB
Group delay ripple (p-p) Aperture 50 kHz	$\Delta\tau$				
	40,81 ... 46,81 (40,75 ... 46,75) MHz	—	40	—	ns
Impedance at 43,81 MHz					
Input: $Z_{\text{IN}} = R_{\text{IN}} \parallel C_{\text{IN}}$		—	1,1 \parallel 16,4	—	k Ω \parallel pF
Output: $Z_{\text{OUT}} = R_{\text{OUT}} \parallel C_{\text{OUT}}$		—	1,1 \parallel 5,0	—	k Ω \parallel pF
Temperature coefficient of frequency	TC_f	—	-72	—	ppm/K



SAW Components

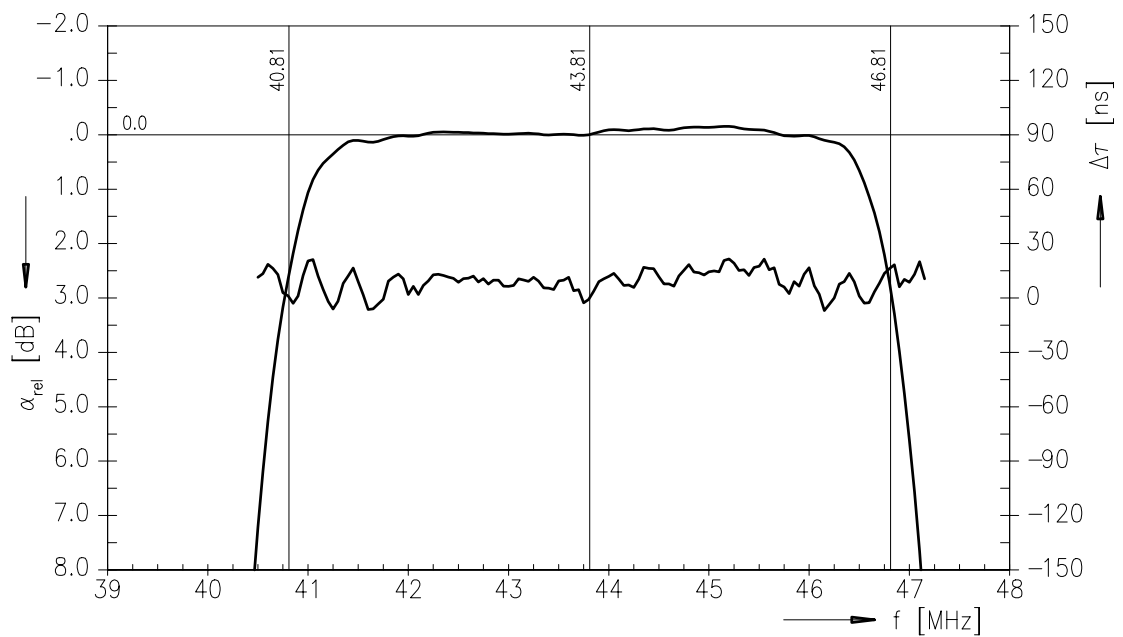
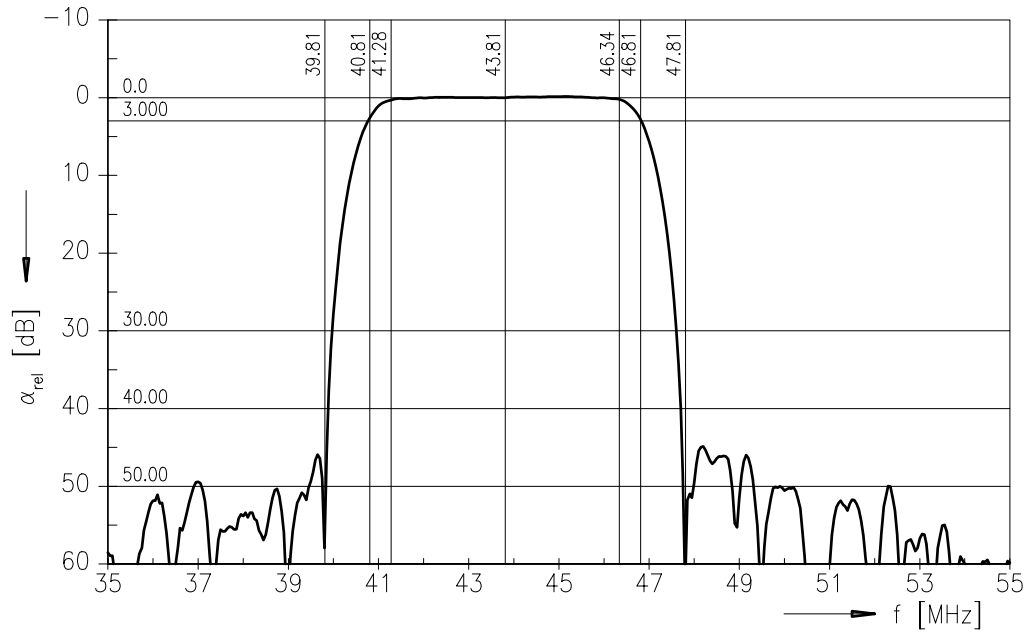
X 6964 M

Bandpass Filter

43,75 MHz

Data Sheet

Frequency response





SAW Components

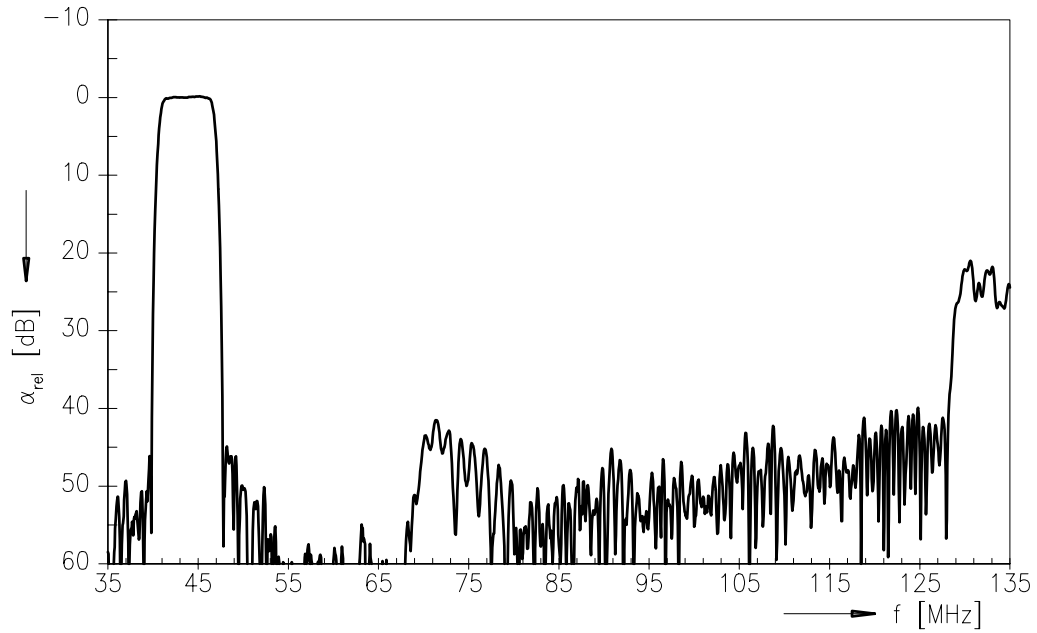
X 6964 M

Bandpass Filter

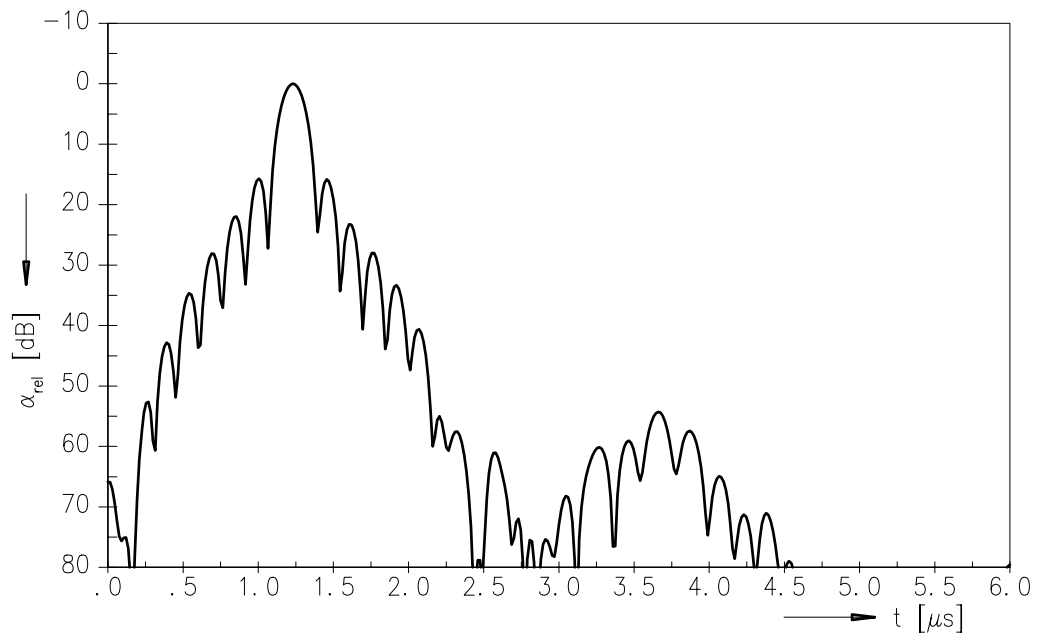
43,75 MHz

Data Sheet

Frequency response



Time domain response





SAW Components

X 6964 M

Bandpass Filter

43,75 MHz

Data Sheet

Published by EPCOS AG

Surface Acoustic Wave Components Division, SAW CE MM PD

P.O. Box 80 17 09, D-81617 München

© EPCOS AG 2001. All Rights Reserved.

As far as patents or other rights of third parties are concerned, liability is only assumed for components per se, not for applications, processes and circuits implemented within components or assemblies.

The information describes the type of component and shall not be considered as assured characteristics.

Terms of delivery and rights to change design reserved.

For questions on technology, prices and delivery please contact the sales offices of EPCOS AG or the international representatives.

Due to technical requirements components may contain dangerous substances. For information on the type in question please also contact one of our sales offices.